

Meeting Date: January 17, 2012
--

BOARD REPORT

Public **In-Camera**
PRESENTED FOR: Information Approval
PRESENTED BY: Senior Administration
SUBMITTED BY: Paul A. Picard, Director of Education
 Cathy Geml, Associate Director of Education
 Emelda Byrne, Superintendent of Education
 Colleen Norris, Manager of Human Resources and Policy Development
SUBJECT: **BOUNDARY ADJUSTMENTS**

RECOMMENDATION:

That the Board receives as information and approve in principle, subject to public consultation the proposed boundary adjustment options for; F.J. Brennan Secondary School, St. Joseph Secondary School, Immaculate Conception Elementary School and St. Angela Elementary School.

and that the Board allow both Catholic Central and Brennan to become open access schools.

and that the Board approve the establishment of a Boundary Review Committee to study the proposed recommendations of Senior Administration and to hear from the affected stake holders.

SYNOPSIS: Demographic shifts, declining enrolment and actual or potential school closures compels senior administration to recommend that the Board engage the Catholic ratepayers in the areas listed above in a consultative process towards potential boundary adjustment recommendations of the noted schools.

BACKGROUND COMMENTS: On October 11th 2011, the Board received a Report from senior administration requesting approval of a boundary adjustment review for the above noted areas. Approval was granted. The Board is in the process of setting dates for the public consultation process and will advise stakeholders of these dates January 18, 2012.

The proposed boundary adjustments for consultation are as follows:

Immaculate Conception Current

North: Detroit River

East: Walker Rd

South: Richmond St./Pierre Ave./Erie St. E. to Windsor south to a line projected to ETR Rail

West: ETR Rail to CP Rail yard north to Detroit River

Boundary Adjustment - Immaculate Conception Proposal 1:

North: Detroit River

East: Walker Rd

South: Richmond St. /Pierre Ave. /Erie St. E. then south along Windsor to Giles Blvd. to CP Rail Yard

West: CP Rail Yard to Detroit River

Immaculate Conception Proposal 2:

North: Detroit River

East: Walker Rd.

South: Niagara St. west to Mercer St. to Elliott St. E. to Ouellette south to ETR Tracks

West: ETR Tracks to CP Rail Yard to Detroit River

St Angela Current

North: Erie St. E./Pierre Ave./Richmond St.

East: Walker Rd.

South: Tecumseh Rd. E.

West: Windsor Ave.

St Angela Proposal 1:

North: Richmond St. /Pierre Ave. /Erie St. E. then south along Windsor to Giles Blvd to CP Rail Yard

West: CP Rail yard south to ETR Tracks

South: A line from ETR Tracks to Windsor Ave. to Tecumseh Rd. E. Tecumseh Rd. E. to Walker Rd.

East: Walker Rd.

St Angela Proposal 2:

North: Niagara St. west to Mercer St. to Elliott St.E. to Ouellette Ave.

West: Ouellette Ave.

South: Tecumseh Rd. E.

East: Walker Rd.

F.J. Brennan Secondary School Current

North: Detroit River

East: Windsor/Tecumseh Municipal line

South: Little River to Radcliffe South to a line extended from Firgrove. Firgrove west to along an extended line to Lauzon Parkway to CN Rail. CN Rail west to Jefferson south to Tecumseh Rd. E. west to Bernard Rd. north to Reginald St. west to Walker.

West: Walker Rd.

Proposed Brennan:

North: Detroit River

East: Little River (the actual river) south to Jerome St. west to a line east of Watson south to St. Rose Ave. to Lauzon Rd. south to Lauzon Parkway south to CP Rail

South: CP Rail west to Jefferson to former Windsor boundary north of the airport west to Airport Railway

West: Airport Railway north to EC Row Expwy. west to Walker Rd., north along Walker to Detroit River

St. Joseph Secondary School- Current

North: Pillette Rd. at CN Tracks east to Lauzon Parkway to a line projected from Firgrove. East along Firgrove to Radcliffe to Little River to the Windsor/Tecumseh Municipal line

East: Windsor/Tecumseh Municipal line south to a projected line to EC Row Expwy.

South: EC Row to Banwell to EC Row Ave. to a line south to CP Rail west to A line projected from George Ave.

West: George Ave. north to Tecumseh Rd. E. to Bernard Rd. north to Reginald St.

St Joseph/Brennan Boundary Adjustment -Proposed St Joseph:

North: Lake St Clair

East: A line east of Lesperance Rd south to EC Row Expwy. (County Rd. 22) (Both sides of LesperanceRd. to St. Joseph)

South: EC Row Expwy. west to Banwell to EC Row Ave. to a line south to CP Rail west to Lauzon Parkway

West: Lauzon Parkway north to Lauzon Rd. to St. Rose Ave. east to a line east of Watson to Jerome St. east to Little River (the river, not the road) north to Detroit River/Lake St. Clair

FINANCIAL IMPACT: To be determined through the consultative process

TIMELINES: January 1, 2012 – March 31, 2012

The Board shall endeavour to have the adjusted boundaries in place for the 2012-2013 school year.

APPENDICES:

- Maps of existing and proposed boundary adjustments.

REPORT REVIEWED BY:

EXECUTIVE COUNCIL

SUPERINTENDENT

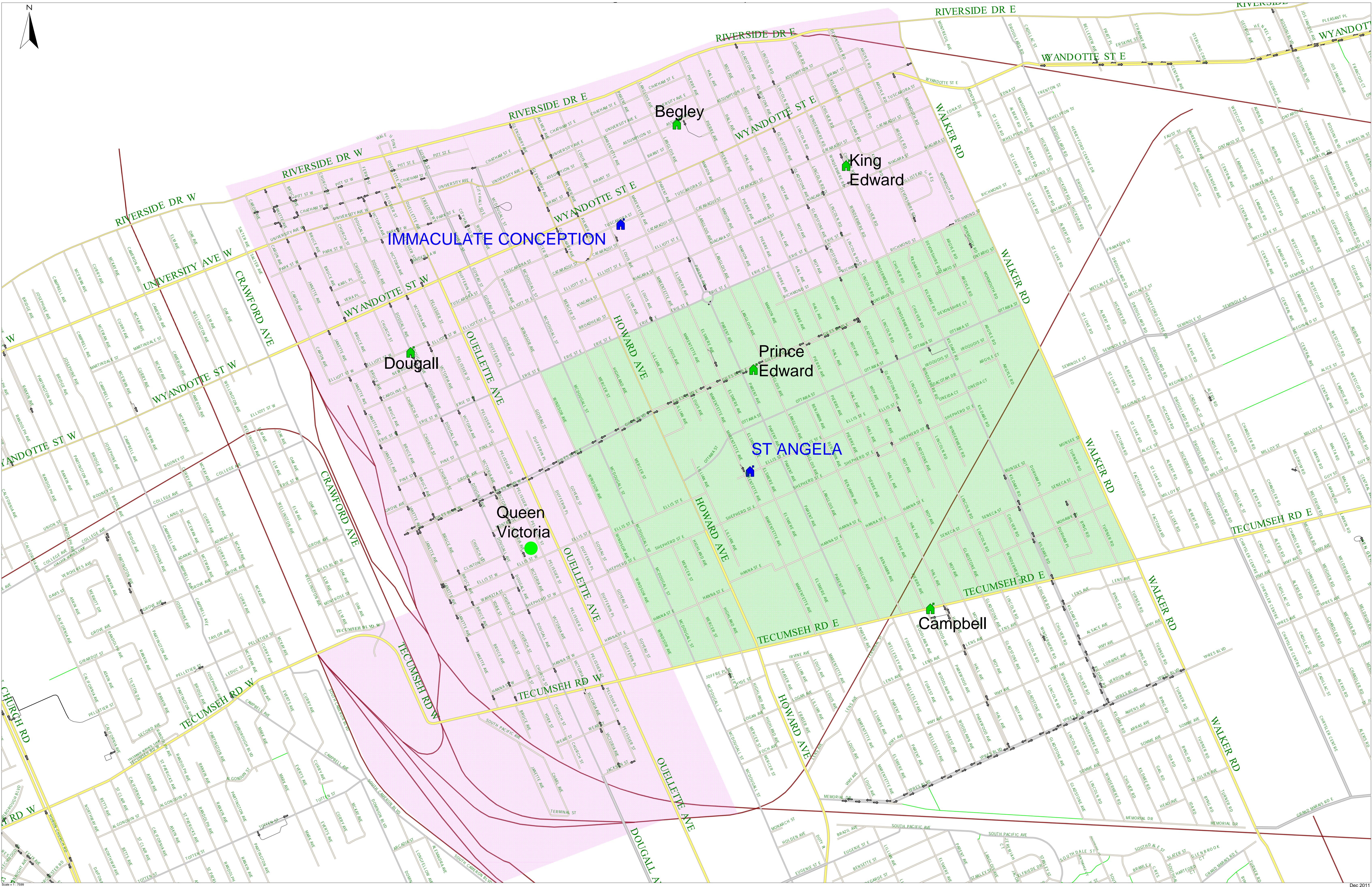
DIRECTOR OF EDUCATION:

Review Date: _____

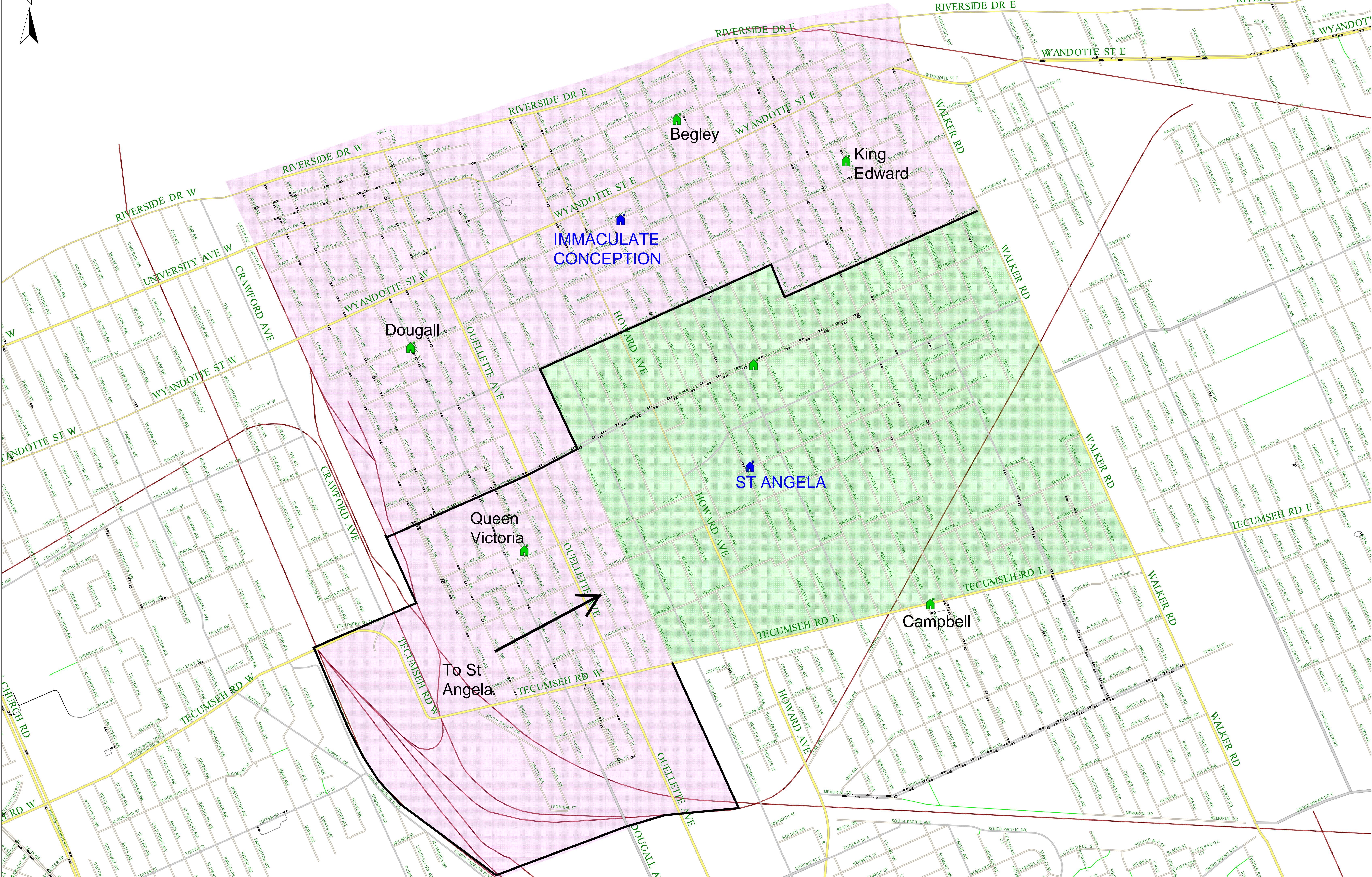
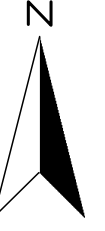
Approval Date: _____

Approval Date: _____

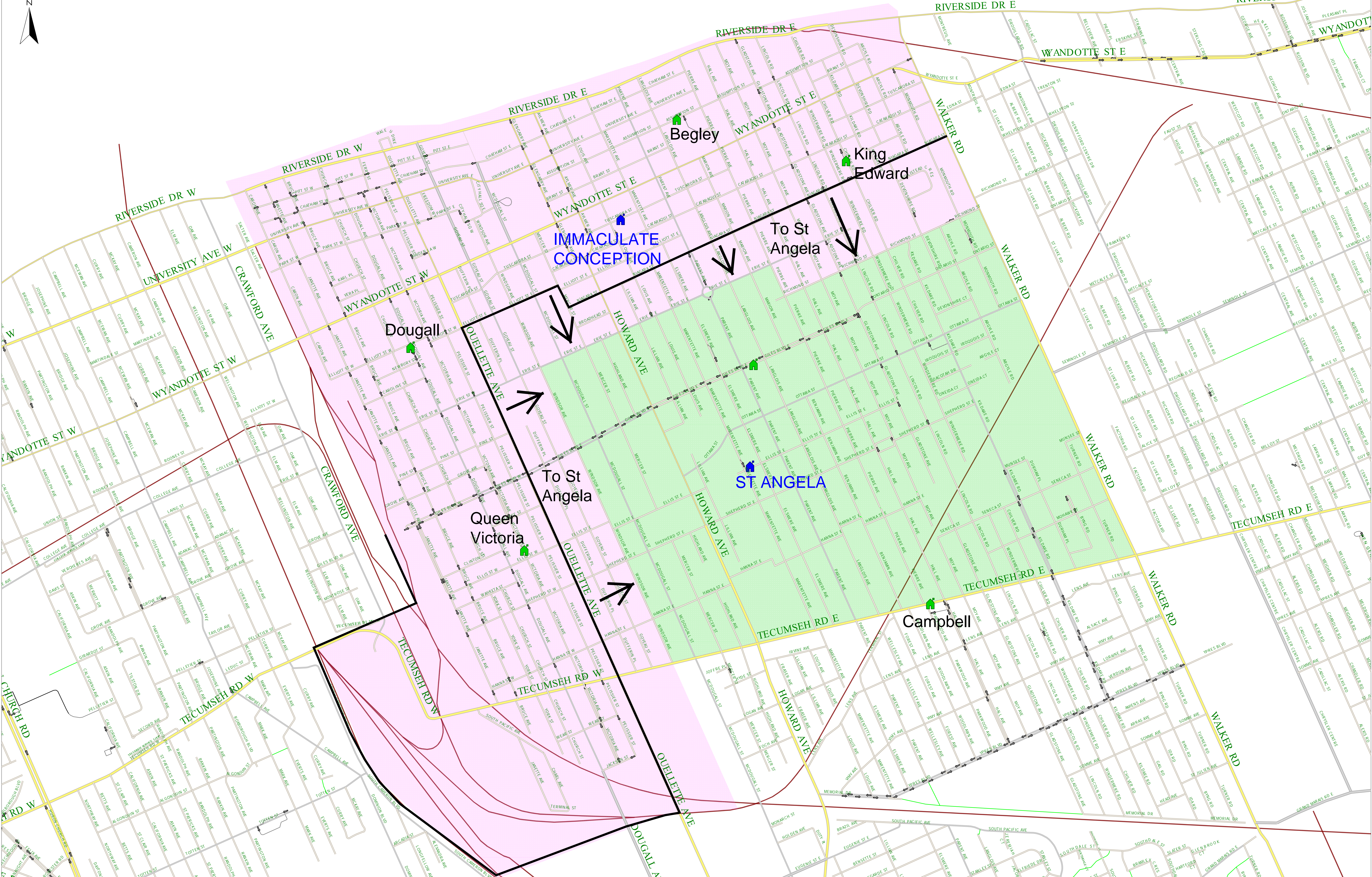
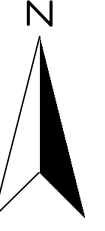
Current St Angela and Immaculate Conception Boundary



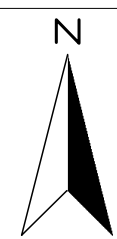
Proposal #1 St Angela & Immaculate Conception Boundary Adjustment



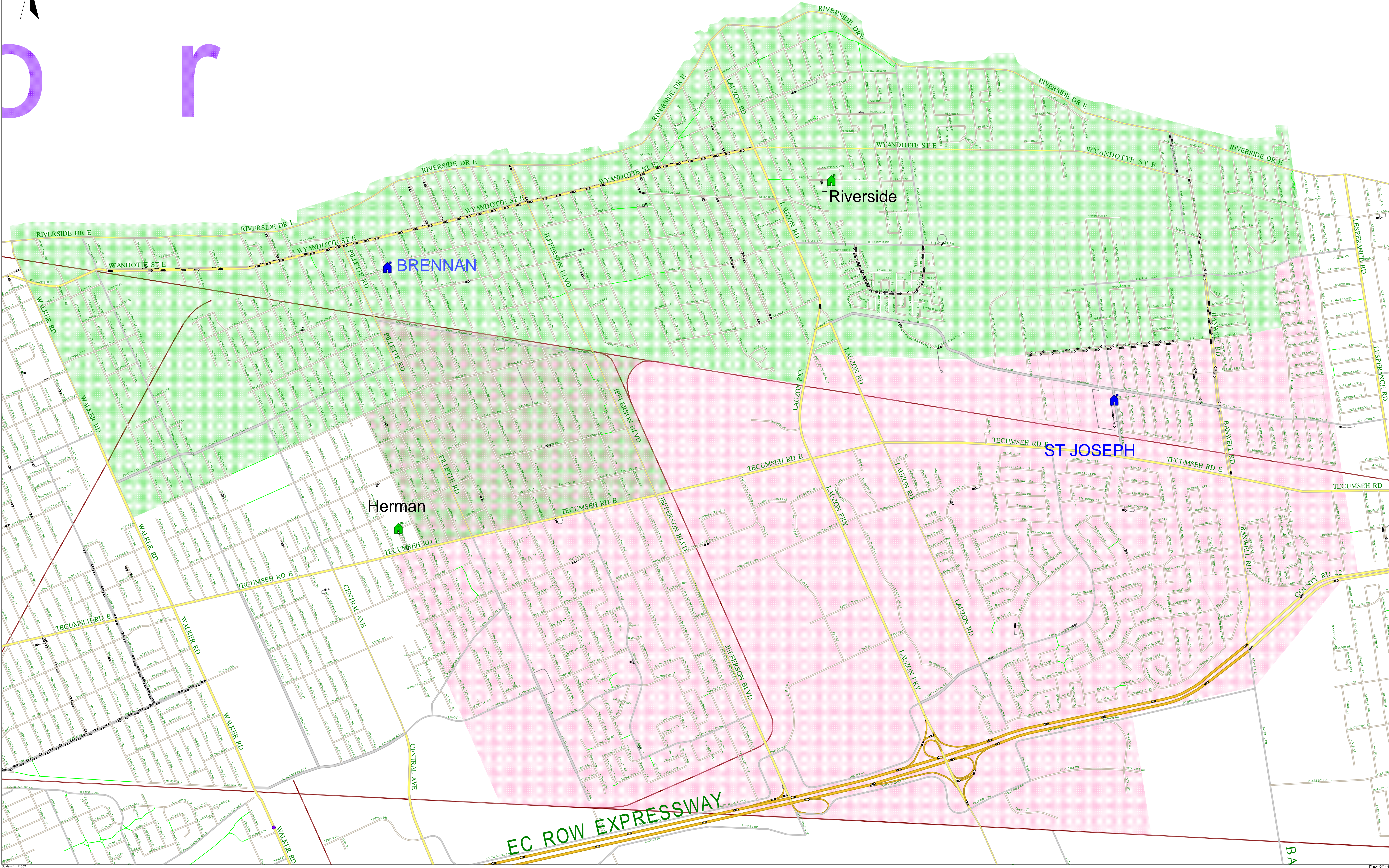
Proposal #2 St Angela & Immaculate Conception Boundary Adjustment



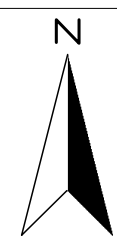
Current Brennan/St Joseph Boundary



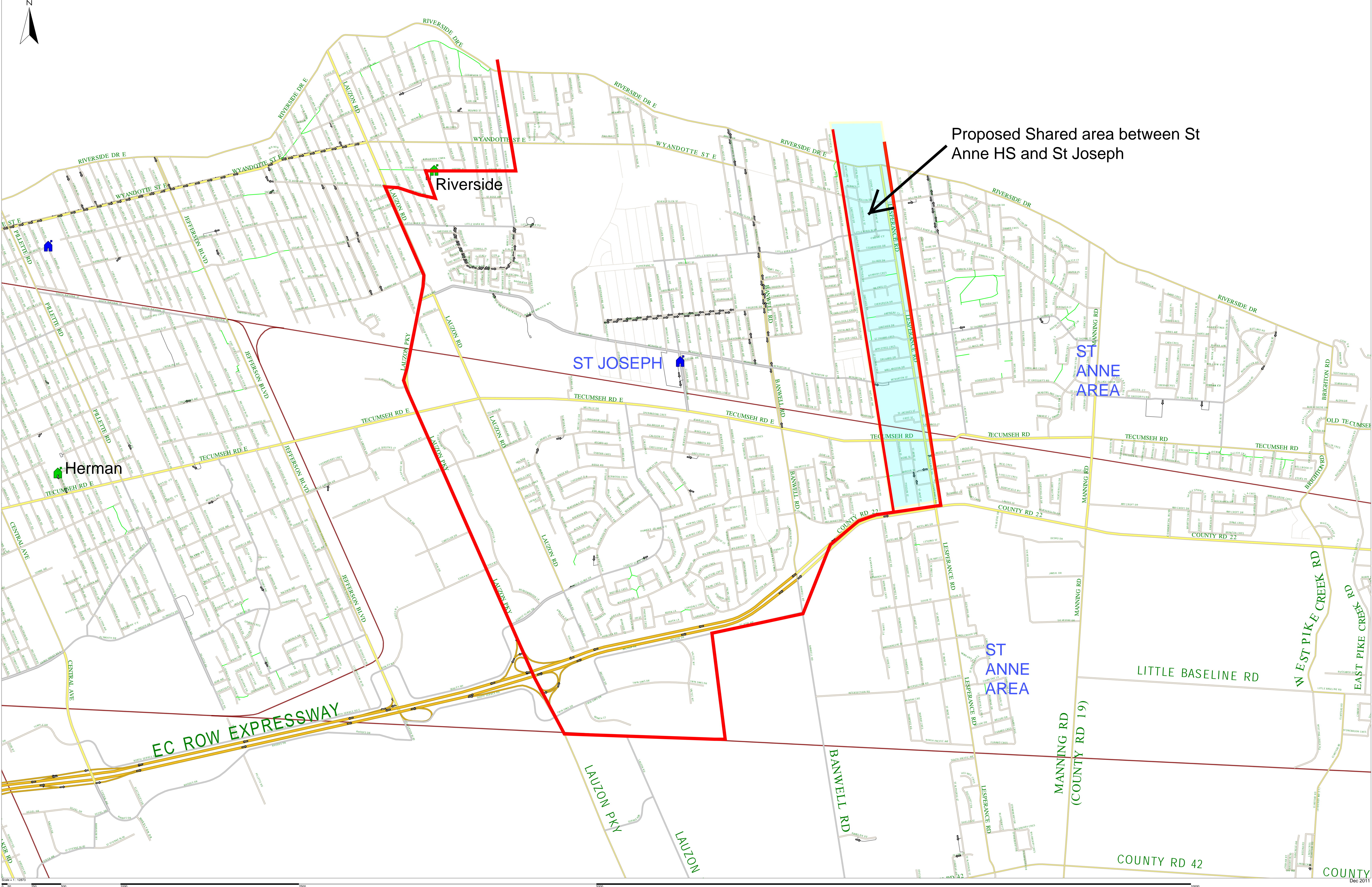
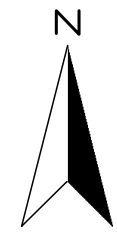
o r



Proposed Brennan Boundary



Proposed St Joseph Boundary and St Anne HS



Proposed Shared area between St Anne HS and St Joseph

Riverside

ST JOSEPH

ST ANNE AREA

ST ANNE AREA

Herman

EC ROW EXPRESSWAY

LITTLE BASELINE RD

WEST PIKE CREEK RD

EAST PIKE CREEK RD

COUNTY RD 42